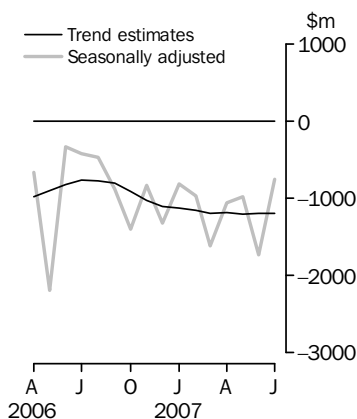


# INTERNATIONAL TRADE IN GOODS AND SERVICES

AUSTRALIA

EMBARGO: 11.30AM (CANBERRA TIME) FRI 31 AUG 2007

## Balance on Goods and Services



## KEY FIGURES

	May 2007	June 2007	July 2007	Jun 07 to Jul 07
	\$m	\$m	\$m	% change
<b>TREND</b>				
Balance on goods and services	-1 207	-1 196	-1 193	..
Credits (exports of goods & services)	18 226	18 243	18 248	—
Debits (imports of goods & services)	19 434	19 439	19 442	—
<b>SEASONALLY ADJUSTED</b>				
Balance on goods and services	-981	-1 737	-756	..
Credits (exports of goods & services)	18 559	17 953	18 361	2
Debits (imports of goods & services)	19 540	19 690	19 118	-3

.. not applicable

— nil or rounded to zero (including null cells)

## KEY POINTS

### TREND ESTIMATES

- The provisional trend estimate of the balance on goods and services was a deficit of \$1,193m in July 2007, a decrease of \$3m on the revised deficit in June.
- Goods and services credits rose \$5m to \$18,248m. Goods and services debits rose \$3m to \$19,442m.

### SEASONALLY ADJUSTED ESTIMATES

- In seasonally adjusted terms, the balance on goods and services was a deficit of \$756m in July 2007, a decrease of \$981m on the revised deficit in June.
- Goods and services credits rose \$408m (2%) to \$18,361m. Non-rural and other goods rose \$348m (3%) and rural goods rose \$61m (3%). Services credits fell \$1m.
- Goods and services debits fell \$572m (3%) to \$19,118m. Capital goods fell \$342m (10%), intermediate and other goods fell \$213m (3%) and consumption goods fell \$22m. Services debits rose \$4m.

### ORIGINAL ESTIMATES

- In original terms, the July 2007 balance on goods and services was a deficit of \$840m, a decrease of \$863m on the deficit in June. Goods and services credits rose \$793m (4%) and goods and services debits fell \$70m.
- Exports of non-rural and other goods in July 2007 were up \$0.4b (3%) while rural goods were down \$0.3b (13%) when compared to July 2006.

## INQUIRIES

For further information about these and related statistics, contact the National Information and Referral Service on 1300 135 070 or Tom Jebbink on Canberra (02) 6252 5540.

# NOTES

## FORTHCOMING ISSUES

<i>ISSUE</i>	<i>RELEASE DATE</i>
August 2007	3 October 2007
September 2007	1 November 2007
October 2007	3 December 2007
November 2007	10 January 2008
December 2007	4 February 2008
January 2008	6 March 2008



## REVISIONS

Revisions were made to the merchandise trade series to incorporate the latest available data. There were no revisions to the balance of payments series in original terms. However, the seasonally adjusted and trend estimates have been revised due to the use of concurrent seasonal adjustment. (See Paragraph 8 in Explanatory Notes).

Denis Farrell  
Acting Australian Statistician

# CONTENTS

page

Time series data . . . . .	4
----------------------------	---

## ANALYSIS

Analysis and comments . . . . .	5
---------------------------------	---

## TABLES

### INTERNATIONAL TRADE IN GOODS AND SERVICES – BALANCE OF PAYMENTS BASIS

<b>1</b> Goods and services, summary, seasonally adjusted and trend estimates . . . . .	10
<b>2</b> Goods and services, summary, original . . . . .	11
<b>3</b> Goods credits, original . . . . .	12
<b>4</b> Goods debits, original . . . . .	13
<b>5</b> Goods credits, seasonally adjusted . . . . .	14
<b>6</b> Goods debits, seasonally adjusted . . . . .	15
<b>7</b> Goods credits, trend estimates . . . . .	16
<b>8</b> Goods debits, trend estimates . . . . .	17
<b>9</b> Services, summary, original . . . . .	18
<b>10</b> Services, summary, seasonally adjusted and trend estimates . . . . .	19
<b>11</b> Services, original, quarterly . . . . .	20

### INTERNATIONAL MERCHANDISE TRADE – RECORDED TRADE BASIS

<b>12</b> International merchandise exports, by commodity . . . . .	21
<b>13</b> International merchandise imports, by commodity . . . . .	24
<b>14</b> International merchandise trade, by country and country groups . . . . .	27
<b>15</b> International merchandise trade, by state . . . . .	28

### OTHER TABLES

<b>16</b> Period average exchange rates per Australian dollar . . . . .	29
---	----

## OTHER INFORMATION

Explanatory Notes . . . . .	30
Abbreviations . . . . .	33
Appendix - Related articles . . . . .	34

## TIME SERIES DATA

### TIME SERIES DATA

Data available free on the ABS web site <<http://www.abs.gov.au>> include longer time series of tables in this publication and additional spreadsheets and data cubes below:

31 Merchandise exports by Broad Economic Category (BEC)

32 Merchandise exports by industry of origin (ANZSIC)

33 Merchandise imports by Broad Economic Category (BEC)

34 Merchandise imports by Balance of Payments Broad Economic Category (BoPBEC)

35 Merchandise imports by industry of origin (ANZSIC)

36 Merchandise exports, state by country and country groups

37 Merchandise imports, state by country and country groups

91 Monthly seasonal adjustment factors and forward factors for 12 months.

Trade in Services data cubes are usually updated on an annual basis - with the March issue of 5368.0 for calendar year and with the September issue for financial year.

Financial year (cat. no. 5368.0.55.003)

1 International trade in services, credits, state by financial year

2 International trade in services, credits, financial year by state

3 International trade in services, debits, state by financial year

4 International trade in services, debits, financial year by state

5 International trade in services, credits, financial year by country and service

6 International trade in services, credits, service by financial year and by country

7 International trade in services, debits, financial year by country and service

8 International trade in services, debits, service by financial year and by country

9 International trade in services, financial year by detailed service

Calendar year (cat. no. 5368.0.55.004)

1 International trade in services, credits, state by calendar year

2 International trade in services, credits, calendar year by state

3 International trade in services, debits, state by calendar year

4 International trade in services, debits, calendar year by state

5 International trade in services, credits, calendar year by country and service

6 International trade in services, credits, service by calendar year and by country

7 International trade in services, debits, calendar year by country and service

8 International trade in services, debits, service by calendar year and by country

9 International trade in services, calendar year by detailed service

## ANALYSIS AND COMMENTS

### BALANCE ON GOODS AND SERVICES

The trend estimate of the balance on goods and services in July 2007 was a deficit of \$1,193m, a decrease of \$3m on the revised deficit in June.

In seasonally adjusted terms, the balance on goods and services in July 2007 was a deficit of \$756m, a decrease of \$981m on the revised deficit in June.

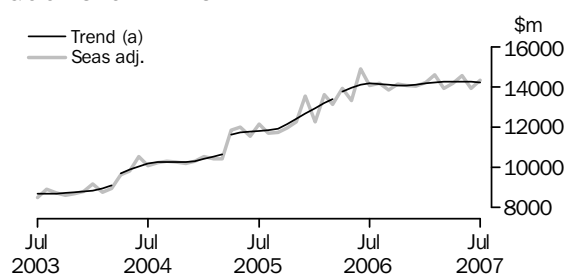
### EXPORTS OF GOODS AND SERVICES

The trend estimate of goods and services credits rose \$5m between June and July to \$18,248m.

In seasonally adjusted terms, goods and services credits rose \$408m (2%) to \$18,361m. Non-rural goods rose \$481m (4%) and rural goods rose \$61m (3%) while other goods fell \$134m (10%). Services credits fell \$1m.

#### Exports of goods

### GOODS CREDITS



(a) Trend breaks of \$430m to April 2004, \$819m to April 2005 and \$150m to April 2006 have been applied.

### RURAL GOODS

The trend estimate of rural goods exports fell \$25m (1%) to \$1,892m.

In seasonally adjusted terms, exports of rural goods rose \$61m (3%) to \$1,921m.

The components contributing to the rise in the seasonally adjusted series were:

- cereal grains and cereal preparations, up \$136m (57%), largely on increased volumes
- meat and meat preparations, up \$8m (2%).

Partly offsetting these effects were:

- wool and sheepskins, down \$57m (21%)
- other rural, down \$26m (3%).

In original terms, exports of rural goods fell \$9m to \$1,917m.

### NON-RURAL GOODS

The trend estimate of non-rural goods exports fell \$15m to \$11,110m.

In seasonally adjusted terms, exports of non-rural goods rose \$481m (4%) to \$11,261m.

The main components contributing to the rise in the seasonally adjusted series were:

- metals (excluding non-monetary gold), up \$294m (28%)
- metal ores and minerals, up \$181m (6%)
- transport equipment, up \$113m (29%)
- other non-rural, up \$58m (4%)
- other manufactures, up \$49m (4%).

## ANALYSIS AND COMMENTS *continued*

### *Exports of goods continued*

#### NON-RURAL GOODS *continued*

Partly offsetting these effects were:

- coal, coke and briquettes, down \$111m (6%)
- other mineral fuels, down \$107m (8%).

In original terms, exports of non-rural goods rose \$571m (5%) to \$11,475m.

Movements in the original series contributing to the rise in seasonally adjusted terms were:

Metals (excluding non-monetary gold), up \$222m (20%), of which:

- aluminium, up \$150m (35%), with volumes up 42% and prices down 5%
- zinc, up \$85m (87%), with volumes up 104% and prices down 8%
- lead, up \$83m (173%), with volumes up 138% and prices up 15%.

Metal ores and minerals, up \$317m (11%), of which:

- copper ore, up \$201m (71%) with volumes up 89% and prices down 10%
- uranium, up \$93m (152%) with volumes up 21% and prices up 108%.

Coal, coke and briquettes, down \$125m (7%), driven by high rank coal, down \$175m (20%), with volumes down 9% and prices down 12%, partly offset by semi-soft coking coal, up \$27m (8%), with volumes up 14% and prices down 5%. Export volumes of high rank coal have been affected by restricted operations at Queensland coal loading terminals due to upgrade and expansion construction activity.

#### OTHER GOODS

The trend estimate of other goods exports rose \$30m (3%) to \$1,224m.

In seasonally adjusted terms, exports of other goods fell \$134m (10%) to \$1,159m.

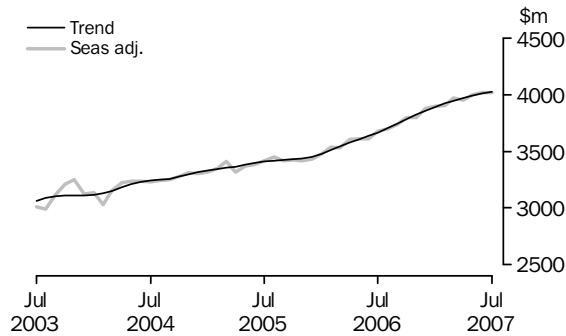
The components contributing to the fall in the seasonally adjusted series were:

- non-monetary gold, down \$113m (10%)
- goods for processing, down \$20m (47%).

In original terms, exports of other goods fell \$141m (11%) to \$1,157m.

Exports of services

SERVICES CREDITS



In trend terms, services credits rose \$14m to \$4,022m.

Seasonally adjusted, services credits fell \$1m to \$4,019m.

The component contributing to the fall in the seasonally adjusted estimates was travel services, down \$20m (1%).

Offsetting this effect were:

- transportation services, up \$10m (1%)
- other services, up \$9m (1%).

Seasonally adjusted, tourism related services credits fell \$21m (1%) to \$2,574m. This series is seasonally adjusted independently to the series that comprise services credits.

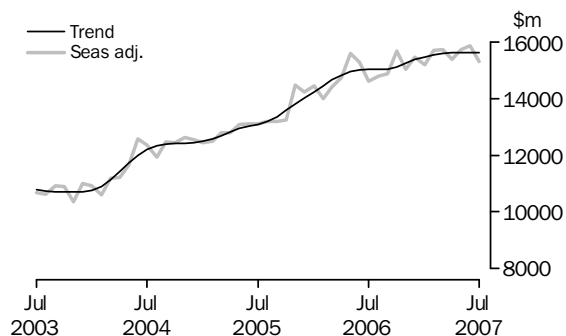
IMPORTS OF GOODS AND SERVICES

The trend estimate of goods and services debits rose \$3m between June and July to \$19,442m.

In seasonally adjusted terms, goods and services debits fell \$572m (3%) to \$19,118m. Capital goods fell \$342m (10%), intermediate and other merchandise goods fell \$213m (3%) and consumption goods fell \$22m. Services debits rose \$4m.

Imports of goods

GOODS DEBITS



## ANALYSIS AND COMMENTS *continued*

### *Imports of goods continued*

#### CONSUMPTION GOODS

The trend estimate of imports of consumption goods fell \$37m (1%) to \$4,548m.

In seasonally adjusted terms, imports of consumption goods fell \$22m to \$4,547m.

The main components contributing to the fall in the seasonally adjusted estimates were:

- consumption goods n.e.s., down \$37m (2%)
- toys, books and leisure goods, down \$32m (9%)
- textiles, clothing and footwear, down \$16m (3%).

Partly offsetting these effects was the food and beverages, mainly for consumption component, up \$58m (10%).

In original terms, imports of consumption goods rose \$305m (7%) to \$4,648m.

#### CAPITAL GOODS

The trend estimate of imports of capital goods fell \$36m (1%) to \$3,401m.

In seasonally adjusted terms, imports of capital goods fell \$342m (10%) to \$3,178m.

The main components contributing to the fall in the seasonally adjusted estimates were:

- civil aircraft, down \$252m
- industrial transport equipment n.e.s., down \$50m (9%)
- telecommunications equipment, down \$33m (7%).

In original terms, imports of capital goods fell \$497m (13%) to \$3,245m.

#### INTERMEDIATE AND OTHER MERCHANDISE GOODS

The trend estimate of imports of intermediate and other merchandise goods rose \$10m to \$6,881m.

In seasonally adjusted terms, imports of intermediate and other merchandise goods fell \$213m (3%) to \$6,717m.

The main components contributing to the fall in the seasonally adjusted estimates were:

- fuels and lubricants, down \$172m (9%), driven by motor spirit, down \$105m (51%), on reduced volumes
- other merchandise goods, down \$96m (52%)
- parts for transport equipment, down \$27m (4%).

Partly offsetting these effects were:

- organic and inorganic chemicals, up \$57m (17%)
- primary industrial supplies n.e.s., up \$26m (20%).

In original terms, intermediate and other merchandise goods rose \$16m to \$6,746m.



## ANALYSIS AND COMMENTS *continued*

### *Imports of goods continued*

#### OTHER GOODS

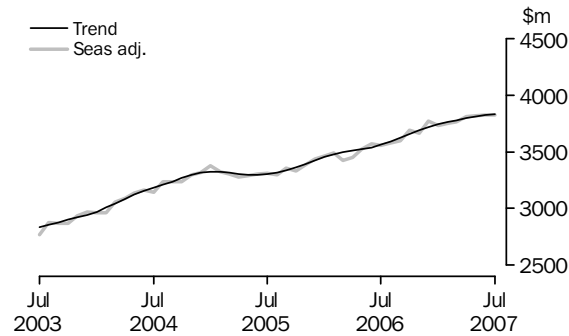
The trend estimate of imports of other goods rose \$53m (7%) to \$778m.

In both original and seasonally adjusted terms, other goods debits remained unchanged at \$849m.

There were minor offsetting movements in the components that comprise other goods.

### *Imports of services*

#### SERVICES DEBITS



In trend terms, services debits rose \$12m to \$3,833m.

Seasonally adjusted, services debits rose \$4m to \$3,826m.

The component that contributed to the rise in the seasonally adjusted estimates was other services, up \$18m (2%).

Partly offsetting this effect were:

- transportation services, down \$9m (1%)
- travel services, down \$5m.

Seasonally adjusted, tourism related services debits fell \$36m (2%) to \$1,974m. This series is seasonally adjusted independently to the series that comprise services debits.

## GOODS AND SERVICES(a), Summary: Seasonally Adjusted and Trend Estimates

Months	BALANCE	CREDITS					DEBITS					
	On goods and services	Total goods and services	Total goods	Rural goods(b)	Non-rural and other goods(b)	Total services	Total goods and services	Total goods	Con-sumption goods	Capital goods	Inter-mediate and other goods	Total services
	\$m	\$m	\$m	\$m	\$m	\$m	\$m	\$m	\$m	\$m	\$m	\$m
SEASONALLY ADJUSTED												
<b>2006</b>												
May	-2 192	16 933	13 325	2 133	11 192	3 608	-19 124	-15 602	-4 375	-3 464	-7 763	-3 522
June	-333	18 510	14 901	2 138	12 763	3 608	-18 842	-15 269	-4 410	-3 408	-7 451	-3 574
July	-423	17 746	14 071	2 206	11 865	3 675	-18 169	-14 612	-4 426	-3 057	-7 128	-3 557
August	-470	17 886	14 189	2 236	11 953	3 697	-18 356	-14 781	-4 440	-3 268	-7 073	-3 575
September	-884	17 583	13 844	2 210	11 634	3 739	-18 467	-14 868	-4 399	-3 310	-7 158	-3 600
October	-1 404	17 944	14 144	2 199	11 945	3 800	-19 348	-15 659	-4 666	-3 471	-7 522	-3 689
November	-837	17 851	14 052	2 233	11 819	3 800	-18 688	-15 027	-4 622	-3 380	-7 024	-3 661
December	-1 325	17 905	14 032	2 107	11 925	3 874	-19 230	-15 462	-4 634	-3 674	-7 154	-3 769
<b>2007</b>												
January	-816	18 107	14 207	2 068	12 139	3 899	-18 923	-15 194	-4 646	-3 460	-7 088	-3 728
February	-974	18 485	14 580	2 078	12 502	3 905	-19 459	-15 710	-4 921	-3 587	-7 202	-3 749
March	-1 619	17 872	13 905	2 056	11 849	3 967	-19 490	-15 726	-4 648	-3 529	-7 549	-3 764
April	-1 062	18 135	14 184	1 964	12 219	3 951	-19 197	-15 388	-4 684	-3 341	-7 363	-3 810
May	-981	18 559	14 565	1 956	12 609	3 994	-19 540	-15 724	-4 575	-3 706	-7 444	-3 816
June	-1 737	17 953	13 933	1 860	12 073	4 020	-19 690	-15 867	-4 569	-3 520	-7 779	-3 822
July	-756	18 361	14 342	1 921	12 421	4 019	-19 118	-15 291	-4 547	-3 178	-7 566	-3 826
TREND ESTIMATES												
<b>2006</b>												
May	-906	17 555	13 949	2 173	11 776	3 606	-18 461	-14 937	-4 347	-3 342	-7 248	-3 524
June	-825	17 728	14 093	2 179	11 914	3 635	-18 552	-15 012	-4 392	-3 305	-7 315	-3 540
July	-766	17 831	14 164	2 193	11 972	3 666	-18 597	-15 035	-4 431	-3 282	-7 322	-3 562
August	-771	17 850	14 148	2 207	11 941	3 702	-18 621	-15 031	-4 463	-3 285	-7 283	-3 590
September	-809	17 857	14 115	2 212	11 904	3 742	-18 666	-15 042	-4 502	-3 322	-7 218	-3 624
October	-911	17 865	14 082	2 203	11 879	3 782	-18 776	-15 118	-4 558	-3 393	-7 167	-3 658
November	-1 028	17 902	14 080	2 179	11 901	3 823	-18 931	-15 242	-4 622	-3 463	-7 156	-3 689
December	-1 105	17 978	14 119	2 144	11 975	3 859	-19 083	-15 365	-4 680	-3 514	-7 172	-3 718
<b>2007</b>												
January	-1 128	18 076	14 184	2 104	12 080	3 892	-19 205	-15 462	-4 717	-3 541	-7 203	-3 743
February	-1 155	18 141	14 221	2 063	12 158	3 921	-19 296	-15 535	-4 723	-3 545	-7 266	-3 761
March	-1 196	18 181	14 235	2 021	12 214	3 946	-19 378	-15 600	-4 702	-3 535	-7 364	-3 778
April	-1 190	18 207	14 238	1 983	12 255	3 969	-19 397	-15 603	-4 666	-3 512	-7 425	-3 794
May	-1 207	18 226	14 236	1 947	12 289	3 990	-19 434	-15 625	-4 625	-3 479	-7 520	-3 809
June	-1 196	18 243	14 235	1 917	12 318	4 008	-19 439	-15 618	-4 585	-3 437	-7 596	-3 821
July	-1 193	18 248	14 226	1 892	12 334	4 022	-19 442	-15 608	-4 548	-3 401	-7 659	-3 833

(a) For sign conventions, see paragraph 10 of the Explanatory Notes.

(b) For all time periods, estimates for sugar, sugar preparations and honey are included in Non-rural and other goods.

## GOODS AND SERVICES(a), Summary: Original

	BALANCE	CREDITS					DEBITS					
	<i>On goods and services</i>	<i>Total goods and services</i>	<i>Total goods</i>	<i>Rural goods(b)</i>	<i>Non-rural and other goods(b)</i>	<i>Total services</i>	<i>Total goods and services</i>	<i>Total goods</i>	<i>Con-sumption goods</i>	<i>Capital goods</i>	<i>Inter-mediate and other goods</i>	<i>Total services</i>
	\$m	\$m	\$m	\$m	\$m	\$m	\$m	\$m	\$m	\$m	\$m	\$m
FINANCIAL YEAR												
<b>2004-05</b>	<b>-22 626</b>	167 562	127 867	25 687	102 180	39 695	-190 188	-150 873	-47 143	-35 967	-67 763	-39 315
<b>2005-06</b>	<b>-14 520</b>	196 274	154 425	25 312	129 113	41 849	-210 794	-169 716	-50 322	-39 996	-79 398	-41 078
<b>2006-07</b>	<b>-12 033</b>	215 850	169 617	25 135	144 482	46 233	-227 883	-183 407	-55 000	-41 157	-87 250	-44 476
MONTHS												
<b>2006</b>												
May	<b>-2 006</b>	17 213	13 776	2 268	11 508	3 437	-19 219	-15 868	-4 267	-3 636	-7 965	-3 351
June	<b>-783</b>	18 188	14 861	2 167	12 694	3 327	-18 971	-15 314	-4 288	-3 651	-7 375	-3 657
July	<b>102</b>	18 185	14 467	2 205	12 262	3 718	-18 083	-14 420	-4 391	-3 027	-7 002	-3 663
August	<b>-783</b>	18 228	14 456	2 261	12 195	3 772	-19 011	-15 481	-4 768	-3 394	-7 319	-3 530
September	<b>-1 486</b>	17 753	14 151	2 266	11 885	3 602	-19 239	-15 336	-4 810	-3 318	-7 208	-3 903
October	<b>-1 789</b>	18 699	14 760	2 277	12 483	3 939	-20 488	-16 666	-5 276	-3 654	-7 736	-3 822
November	<b>-1 565</b>	17 859	13 999	2 213	11 786	3 860	-19 424	-15 881	-5 143	-3 626	-7 112	-3 543
December	<b>-98</b>	18 686	14 799	2 201	12 598	3 887	-18 784	-14 816	-4 351	-3 658	-6 807	-3 968
<b>2007</b>												
January	<b>-2 039</b>	16 566	12 726	1 650	11 076	3 840	-18 605	-14 720	-4 372	-3 228	-7 120	-3 885
February	<b>-237</b>	17 334	13 351	1 968	11 383	3 983	-17 571	-14 278	-4 387	-3 025	-6 866	-3 293
March	<b>-1 059</b>	18 108	13 989	2 156	11 833	4 119	-19 167	-15 534	-4 412	-3 448	-7 674	-3 633
April	<b>-598</b>	17 914	13 913	1 927	11 986	4 001	-18 512	-14 782	-4 330	-3 220	-7 232	-3 730
May	<b>-778</b>	18 688	14 878	2 085	12 793	3 810	-19 466	-15 829	-4 417	-3 817	-7 595	-3 637
June	<b>-1 703</b>	17 830	14 128	1 926	12 202	3 702	-19 533	-15 664	-4 343	-3 742	-7 579	-3 869
July	<b>-840</b>	18 623	14 549	1 917	12 632	4 074	-19 463	-15 488	-4 648	-3 245	-7 595	-3 975
FINANCIAL YEAR TO DATE												
<b>1 month ended July</b>												
2006	<b>102</b>	18 185	14 467	2 205	12 262	3 718	-18 083	-14 420	-4 391	-3 027	-7 002	-3 663
2007	<b>-840</b>	18 623	14 549	1 917	12 632	4 074	-19 463	-15 488	-4 648	-3 245	-7 595	-3 975

(a) For sign conventions, see paragraph 10 of the Explanatory Notes.

(b) For all time periods, estimates for sugar, sugar preparations and honey are included in Non-rural and other goods.

							1 MONTH ENDED JULY		Change
	2004-05	2005-06	2006-07	May	Jun	Jul	2006	2007	
	\$m	\$m	\$m	2007	2007	2007	\$m	\$m	
<b>Total goods credits</b>	<b>127 867</b>	<b>154 425</b>	<b>169 617</b>	<b>14 878</b>	<b>14 128</b>	<b>14 549</b>	<b>14 467</b>	<b>14 549</b>	<b>0.6</b>
<i>Rural goods</i>	25 687	25 312	25 135	2 085	1 926	1 917	2 205	1 917	-13.1
Meat and meat preparations	6 937	6 709	7 086	560	536	521	579	521	-10.0
Cereal grains and cereal preparations	5 159	4 852	4 175	306	202	353	445	353	-20.7
Wool and sheepskins	2 838	2 544	3 069	289	303	202	226	202	-10.6
Other rural (a)	10 753	11 207	10 805	930	885	841	955	841	-11.9
<i>Non-rural goods</i>	94 328	118 164	131 858	11 577	10 904	11 475	11 257	11 475	1.9
Metal ores and minerals	19 854	28 936	35 219	3 122	2 865	3 182	3 036	3 182	4.8
Coal, coke and briquettes	17 236	24 353	22 021	1 797	1 732	1 607	2 019	1 607	-20.4
Other mineral fuels	11 151	13 220	15 568	1 126	1 224	1 307	1 531	1 307	-14.6
Metals (excl. non-monetary gold)	8 668	11 278	14 824	1 437	1 090	1 312	1 177	1 312	11.5
Machinery	7 488	8 087	8 443	748	743	765	749	765	2.1
Transport equipment	4 943	5 316	4 656	478	405	474	290	474	63.4
Other manufactures	14 043	14 926	16 194	1 442	1 390	1 465	1 380	1 465	6.2
Other non-rural (incl. sugar and beverages)	10 945	12 048	14 933	1 427	1 455	1 363	1 075	1 363	26.8
<i>Other goods</i>	7 852	10 949	12 624	1 216	1 298	1 157	1 005	1 157	15.1
Goods for processing	241	368	417	55	43	23	67	23	-65.7
Repairs on goods	67	74	90	9	12	8	7	8	14.3
Goods procured in ports by carriers	1 072	1 420	1 379	113	117	113	111	113	1.8
Non-monetary gold	6 472	9 087	10 738	1 039	1 126	1 013	820	1 013	23.5

(a) For all time periods, estimates for sugar, sugar preparations and honey are included in Other non-rural.

## GOODS DEBITS(a): Original

	1 MONTH ENDED JULY								
	2004-05	2005-06	2006-07	May	Jun	Jul	2006	2007	Change
	\$m	\$m	\$m	\$m	\$m	\$m	\$m	\$m	%
<b>Total goods debits</b>	<b>-150 873</b>	<b>-169 716</b>	<b>-183 407</b>	<b>-15 829</b>	<b>-15 664</b>	<b>-15 488</b>	<b>-14 420</b>	<b>-15 488</b>	<b>7.4</b>
<i>Consumption goods</i>	-47 143	-50 322	-55 000	-4 417	-4 343	-4 648	-4 391	-4 648	5.9
Food and beverages, mainly for consumption	-5 767	-6 170	-7 185	-561	-502	-581	-514	-581	13.0
Household electrical items	-4 024	-4 291	-4 609	-370	-360	-415	-338	-415	22.8
Non-industrial transport equipment	-13 003	-13 589	-14 889	-1 180	-1 274	-1 177	-1 194	-1 177	-1.4
Textiles, clothing and footwear	-5 811	-6 365	-6 806	-473	-483	-614	-591	-614	3.9
Toys, books and leisure goods	-3 740	-4 055	-4 330	-375	-355	-327	-325	-327	0.6
Consumption goods n.e.s.	-14 798	-15 852	-17 181	-1 458	-1 369	-1 534	-1 429	-1 534	7.3
<i>Capital goods</i>	-35 967	-39 996	-41 157	-3 817	-3 742	-3 245	-3 027	-3 245	7.2
Machinery and industrial equipment	-13 409	-14 328	-15 294	-1 173	-1 250	-1 252	-1 131	-1 252	10.7
ADP equipment	-5 761	-6 073	-6 847	-632	-661	-588	-562	-588	4.6
Telecommunications equipment	-4 568	-5 334	-5 334	-489	-479	-435	-456	-435	-4.6
Civil aircraft	-2 496	-2 967	-1 673	-414	-262	-10	-55	-10	-81.8
Industrial transport equipment n.e.s.	-4 981	-5 495	-6 423	-622	-613	-497	-361	-497	37.7
Capital goods n.e.s.	-4 752	-5 799	-5 586	-487	-477	-463	-462	-463	0.2
<i>Intermediate and other merchandise goods</i>	-63 730	-72 722	-79 833	-7 047	-6 730	-6 746	-6 256	-6 746	7.8
Food and beverages, mainly for industry	-659	-651	-819	-74	-69	-73	-49	-73	49.0
Primary industrial supplies n.e.s.	-1 052	-1 193	-1 555	-95	-106	-138	-79	-138	74.7
Fuels and lubricants	-14 720	-21 014	-21 379	-2 056	-1 990	-1 818	-1 809	-1 818	0.5
Parts for transport equipment	-7 008	-7 314	-8 363	-701	-693	-697	-670	-697	4.0
Parts for ADP equipment	-1 787	-1 857	-1 621	-126	-117	-102	-148	-102	-31.1
Other parts for capital goods	-9 485	-10 154	-11 769	-1 061	-967	-1 025	-913	-1 025	12.3
Organic and inorganic chemicals	-3 622	-4 134	-4 407	-371	-297	-383	-332	-383	15.4
Paper and paperboard	-2 313	-2 302	-2 371	-209	-173	-217	-192	-217	13.0
Textile yarn and fabrics	-1 452	-1 361	-1 365	-114	-111	-115	-121	-115	-5.0
Iron and steel	-3 008	-3 239	-3 817	-309	-324	-331	-243	-331	36.2
Plastics	-2 428	-2 517	-2 958	-266	-232	-242	-221	-242	9.5
Processed industrial supplies n.e.s.	-15 142	-15 856	-17 790	-1 558	-1 468	-1 518	-1 324	-1 518	14.7
Other merchandise goods	-1 054	-1 130	-1 619	-107	-183	-87	-155	-87	-43.9
<i>Other goods</i>	-4 033	-6 676	-7 417	-548	-849	-849	-746	-849	13.8
Goods for processing	-243	-445	-503	-1	-1	-1	-139	-1	-99.3
Repairs on goods	-182	-115	-131	-10	-10	-14	-14	-14	—
Goods procured in ports by carriers	-1 049	-1 406	-1 467	-116	-115	-126	-142	-126	-11.3
Non-monetary gold	-2 559	-4 710	-5 316	-421	-723	-708	-451	-708	57.0

— nil or rounded to zero (including null cells)

(a) For sign conventions, see paragraph 10 of the Explanatory Notes.

## GOODS CREDITS: Seasonally Adjusted

	Oct 2006	Nov 2006	Dec 2006	Jan 2007	Feb 2007	Mar 2007	Apr 2007	May 2007	Jun 2007	Jul 2007
	\$m	\$m	\$m	\$m	\$m	\$m	\$m	\$m	\$m	\$m
<b>Total goods credits</b>	<b>14 144</b>	<b>14 052</b>	<b>14 032</b>	<b>14 207</b>	<b>14 580</b>	<b>13 905</b>	<b>14 184</b>	<b>14 565</b>	<b>13 933</b>	<b>14 342</b>
<i>Rural goods</i>	2 199	2 233	2 107	2 068	2 078	2 056	1 964	1 956	1 860	1 921
Meat and meat preparations	620	639	634	647	617	590	554	523	502	510
Cereal grains and cereal preparations	400	361	324	280	291	279	280	291	238	374
Wool and sheepskins	241	239	251	274	283	282	273	277	275	218
Other rural(a)	939	994	898	868	886	905	858	865	845	819
<i>Non-rural goods</i>	10 902	10 979	10 887	11 149	11 385	10 858	11 159	11 394	10 780	11 261
Metal ores and minerals	3 046	2 955	3 074	2 900	3 101	2 623	2 975	3 038	2 883	3 064
Coal, coke and briquettes	1 764	1 814	1 789	1 939	1 803	1 817	1 776	1 808	1 726	1 615
Other mineral fuels	1 355	1 235	1 280	1 265	1 324	1 283	1 374	1 261	1 268	1 161
Metals (excl. non-monetary gold)	1 230	1 193	1 265	1 290	1 338	1 295	1 336	1 369	1 036	1 330
Machinery	684	668	673	708	690	728	733	733	732	736
Transport equipment	428	395	380	364	404	381	382	432	388	501
Other manufactures	1 300	1 420	1 266	1 422	1 400	1 490	1 249	1 380	1 369	1 418
Other non-rural (incl. sugar and beverages)	1 095	1 298	1 159	1 262	1 325	1 240	1 335	1 374	1 378	1 436
<i>Other goods</i>	1 043	839	1 037	990	1 117	991	1 060	1 215	1 293	1 159
Goods for processing(b)	5	52	14	36	28	61	9	55	43	23
Repairs on goods(b)	6	6	7	5	6	10	7	9	12	8
Goods procured in ports by carriers	94	113	117	116	112	115	118	112	112	115
Non-monetary gold(b)	938	668	899	833	971	805	926	1 039	1 126	1 013

(a) For all time periods, estimates for sugar, sugar preparations and honey are included in Other non-rural.

(b) This component is not seasonally adjusted.

## GOODS DEBITS(a): Seasonally Adjusted

	Oct 2006	Nov 2006	Dec 2006	Jan 2007	Feb 2007	Mar 2007	Apr 2007	May 2007	Jun 2007	Jul 2007
	\$m	\$m	\$m	\$m	\$m	\$m	\$m	\$m	\$m	\$m
<b>Total goods debits</b>	<b>-15 659</b>	<b>-15 027</b>	<b>-15 462</b>	<b>-15 194</b>	<b>-15 710</b>	<b>-15 726</b>	<b>-15 388</b>	<b>-15 724</b>	<b>-15 867</b>	<b>-15 291</b>
<i>Consumption goods</i>	-4 666	-4 622	-4 634	-4 646	-4 921	-4 648	-4 684	-4 575	-4 569	-4 547
Food and beverages, mainly for consumption	-573	-643	-621	-607	-682	-639	-596	-588	-564	-622
Household electrical items	-433	-396	-387	-359	-379	-382	-341	-397	-409	-423
Non-industrial transport equipment	-1 305	-1 261	-1 279	-1 294	-1 289	-1 270	-1 388	-1 158	-1 145	-1 135
Textiles, clothing and footwear	-578	-584	-574	-566	-600	-552	-549	-563	-578	-562
Toys, books and leisure goods	-345	-350	-358	-372	-382	-391	-376	-376	-370	-338
Consumption goods n.e.s.	-1 432	-1 387	-1 415	-1 448	-1 590	-1 414	-1 433	-1 492	-1 504	-1 467
<i>Capital goods</i>	-3 471	-3 380	-3 674	-3 460	-3 587	-3 529	-3 341	-3 706	-3 520	-3 178
Machinery and industrial equipment	-1 342	-1 318	-1 270	-1 316	-1 315	-1 360	-1 319	-1 232	-1 240	-1 237
ADP equipment	-609	-566	-598	-605	-659	-599	-563	-558	-542	-536
Telecommunications equipment	-451	-467	-452	-447	-402	-430	-440	-466	-472	-439
Civil aircraft(b)	-80	-24	-352	-27	-57	-14	-38	-414	-262	-10
Industrial transport equipment n.e.s.	-521	-525	-540	-598	-706	-641	-529	-568	-539	-489
Capital goods n.e.s.	-467	-481	-462	-467	-448	-486	-452	-467	-465	-467
<i>Intermediate and other merchandise goods</i>	-6 626	-6 569	-6 677	-6 486	-6 492	-7 055	-6 770	-6 896	-6 930	-6 717
Food and beverages, mainly for industry	-68	-74	-94	-62	-70	-68	-70	-67	-71	-69
Primary industrial supplies n.e.s.(c)	-185	-113	-138	-118	-147	-151	-153	-90	-132	-158
Fuels and lubricants(b)	-1 765	-1 523	-1 881	-1 521	-1 510	-1 873	-1 746	-2 056	-1 990	-1 818
Parts for transport equipment	-719	-693	-691	-692	-720	-733	-708	-682	-707	-680
Parts for ADP equipment	-151	-153	-152	-137	-109	-117	-112	-116	-100	-99
Other parts for capital goods	-948	-953	-967	-1 091	-1 016	-1 055	-1 042	-1 028	-992	-978
Organic and inorganic chemicals(c)	-375	-577	-267	-396	-374	-368	-365	-341	-334	-391
Paper and paperboard	-182	-190	-192	-197	-204	-196	-205	-209	-194	-215
Textile yarn and fabrics	-115	-118	-115	-111	-116	-114	-116	-108	-107	-105
Iron and steel	-325	-388	-293	-347	-327	-363	-336	-307	-335	-332
Plastics	-245	-246	-254	-244	-247	-256	-247	-257	-252	-251
Processed industrial supplies n.e.s.	-1 450	-1 450	-1 477	-1 484	-1 567	-1 480	-1 589	-1 529	-1 532	-1 535
Other merchandise goods(b)	-97	-90	-157	-85	-83	-280	-82	-107	-183	-87
<i>Other goods</i>	-896	-455	-477	-602	-710	-494	-593	-548	-849	-849
Goods for processing(b)	-20	-1	-81	-50	-29	-112	-1	-1	-1	-1
Repairs on goods(b)	-6	-8	-7	-10	-17	-11	-8	-10	-10	-14
Goods procured in ports by carriers(b)	-122	-122	-120	-110	-109	-109	-116	-116	-115	-126
Non-monetary gold(d)	-748	-324	-269	-432	-555	-262	-468	-421	-723	-708

(a) For sign conventions, see paragraph 10 of the Explanatory Notes.

(b) These components are not seasonally adjusted.

(c) In using these seasonally adjusted series, care should be exercised because of the difficulties associated with reliably estimating the seasonal pattern.

(d) From October 1995, this component is not seasonally adjusted.

	Oct 2006	Nov 2006	Dec 2006	Jan 2007	Feb 2007	Mar 2007	Apr 2007	May 2007	Jun 2007	Jul 2007
	\$m	\$m	\$m	\$m	\$m	\$m	\$m	\$m	\$m	\$m
<b>Total goods credits</b>	<b>14 082</b>	<b>14 080</b>	<b>14 119</b>	<b>14 184</b>	<b>14 221</b>	<b>14 235</b>	<b>14 238</b>	<b>14 236</b>	<b>14 235</b>	<b>14 226</b>
<i>Rural goods</i>	2 203	2 179	2 144	2 104	2 063	2 021	1 983	1 947	1 917	1 892
Meat and meat preparations	625	634	637	630	612	587	560	535	515	498
Cereal grains and cereal preparations	413	372	334	301	283	278	280	286	295	307
Wool and sheepskins	234	245	257	268	276	278	276	269	261	251
Other rural(a)	932	927	917	905	891	878	867	857	847	837
<i>Non-rural goods</i>	10 908	10 938	11 003	11 081	11 125	11 138	11 135	11 129	11 125	11 110
Metal ores and minerals	2 980	2 978	2 975	2 961	2 933	2 917	2 920	2 937	2 960	2 991
Coal, coke and briquettes	1 833	1 819	1 818	1 829	1 834	1 820	1 791	1 757	1 721	1 682
Other mineral fuels	1 296	1 287	1 283	1 292	1 302	1 304	1 297	1 279	1 256	1 231
Metals (excl. non-monetary gold)	1 201	1 222	1 257	1 292	1 310	1 309	1 295	1 276	1 256	1 239
Machinery	686	682	684	693	704	716	726	732	736	738
Transport equipment	388	390	389	385	383	388	399	414	431	447
Other manufactures	1 334	1 352	1 368	1 381	1 385	1 383	1 378	1 375	1 376	1 373
Other non-rural (incl. sugar and beverages)	1 189	1 208	1 228	1 248	1 272	1 300	1 329	1 358	1 388	1 409
<i>Other goods</i>	971	963	972	999	1 033	1 076	1 120	1 160	1 194	1 224
Goods for processing	25	25	28	32	35	37	38	38	37	35
Repairs on goods	7	6	6	6	7	8	8	9	10	10
Goods procured in ports by carriers	113	111	112	113	114	115	115	114	114	114
Non-monetary gold	827	820	827	847	877	916	959	999	1 033	1 065

(a) For all time periods, estimates for sugar, sugar preparations and honey are included in Other non-rural.



## GOODS DEBITS(a): Trend Estimates

	Oct 2006	Nov 2006	Dec 2006	Jan 2007	Feb 2007	Mar 2007	Apr 2007	May 2007	Jun 2007	Jul 2007
	\$m	\$m	\$m	\$m	\$m	\$m	\$m	\$m	\$m	\$m
<b>Total goods debits</b>	<b>-15 118</b>	<b>-15 242</b>	<b>-15 365</b>	<b>-15 462</b>	<b>-15 535</b>	<b>-15 600</b>	<b>-15 603</b>	<b>-15 625</b>	<b>-15 618</b>	<b>-15 608</b>
<i>Consumption goods</i>	-4 558	-4 622	-4 680	-4 717	-4 723	-4 702	-4 666	-4 625	-4 585	-4 548
Food and beverages, mainly for consumption	-593	-612	-628	-637	-635	-625	-613	-602	-594	-588
Household electrical items	-395	-395	-388	-379	-372	-372	-378	-388	-399	-410
Non-industrial transport equipment	-1 248	-1 266	-1 285	-1 299	-1 299	-1 283	-1 256	-1 223	-1 186	-1 152
Textiles, clothing and footwear	-572	-576	-577	-575	-571	-567	-565	-564	-563	-564
Toys, books and leisure goods	-349	-355	-362	-371	-378	-380	-378	-373	-366	-358
Consumption goods n.e.s.	-1 401	-1 419	-1 439	-1 456	-1 469	-1 474	-1 476	-1 477	-1 477	-1 476
<i>Capital goods</i>	-3 393	-3 463	-3 514	-3 541	-3 545	-3 535	-3 512	-3 479	-3 437	-3 401
Machinery and industrial equipment	-1 277	-1 296	-1 313	-1 323	-1 321	-1 310	-1 295	-1 276	-1 256	-1 236
ADP equipment	-574	-591	-605	-612	-610	-598	-582	-564	-548	-534
Telecommunications equipment	-448	-449	-445	-439	-435	-436	-441	-448	-454	-459
Civil aircraft	-132	-120	-102	-92	-98	-117	-140	-163	-176	-197
Industrial transport equipment n.e.s.	-501	-543	-581	-608	-617	-610	-590	-563	-537	-510
Capital goods n.e.s.	-462	-464	-468	-467	-465	-464	-464	-465	-466	-466
<i>Intermediate and other merchandise goods</i>	-6 570	-6 569	-6 592	-6 633	-6 693	-6 761	-6 819	-6 856	-6 871	-6 881
Food and beverages, mainly for industry	-71	-75	-75	-74	-72	-70	-68	-68	-68	-70
Primary industrial supplies n.e.s.	-133	-135	-138	-138	-137	-135	-135	-134	-134	-136
Fuels and lubricants	-1 721	-1 659	-1 633	-1 641	-1 686	-1 755	-1 826	-1 887	-1 929	-1 974
Parts for transport equipment	-694	-700	-704	-707	-710	-710	-707	-702	-697	-690
Parts for ADP equipment	-157	-151	-143	-134	-125	-118	-112	-108	-104	-101
Other parts for capital goods	-945	-971	-999	-1 024	-1 039	-1 041	-1 034	-1 022	-1 008	-991
Organic and inorganic chemicals	-396	-402	-399	-387	-372	-361	-356	-357	-360	-356
Paper and paperboard	-195	-193	-194	-195	-198	-201	-203	-204	-206	-207
Textile yarn and fabrics	-116	-116	-115	-115	-115	-114	-112	-110	-108	-107
Iron and steel	-316	-331	-340	-342	-340	-336	-334	-332	-331	-327
Plastics	-245	-247	-248	-249	-250	-251	-251	-252	-253	-253
Processed industrial supplies n.e.s.	-1 454	-1 468	-1 483	-1 500	-1 517	-1 530	-1 538	-1 541	-1 542	-1 541
Other merchandise goods	-126	-121	-121	-126	-134	-140	-142	-138	-132	-128
<i>Other goods</i>	-597	-587	-580	-570	-574	-602	-606	-665	-725	-778
Goods for processing	-32	-30	-38	-50	-61	-64	-12	-9	-5	-3
Repairs on goods	-10	-10	-10	-10	-11	-11	-11	-11	-11	-11
Goods procured in ports by carriers	-130	-124	-117	-113	-111	-112	-113	-116	-118	-121
Non-monetary gold	-425	-424	-415	-397	-392	-416	-470	-529	-591	-643

(a) For sign conventions, see paragraph 10 of the Explanatory Notes.

## SERVICES (a)(b), Summary: Original

	1 MONTH ENDED JULY								
	2004-05	2005-06	2006-07	May 2007	Jun 2007	Jul 2007	2006	2007	Change
	\$m	\$m	\$m	\$m	\$m	\$m	\$m	\$m	%
<b>Services credits</b>	<b>39 695</b>	<b>41 849</b>	<b>46 233</b>	<b>3 810</b>	<b>3 702</b>	<b>4 074</b>	<b>3 718</b>	<b>4 074</b>	<b>9.6</b>
<i>Transportation services</i>	8 002	8 208	8 763	700	712	785	710	785	10.6
Freight	704	608	617	50	52	46	53	46	-13.2
Passenger and other	7 298	7 600	8 146	650	660	739	657	739	12.5
<i>Travel services</i>	21 440	22 624	25 220	2 074	1 952	2 244	2 021	2 244	11.0
<i>Other services</i>	10 253	11 017	12 250	1 036	1 038	1 045	987	1 045	5.9
<b>Services debits</b>	<b>-39 315</b>	<b>-41 078</b>	<b>-44 476</b>	<b>-3 637</b>	<b>-3 869</b>	<b>-3 975</b>	<b>-3 663</b>	<b>-3 975</b>	<b>8.5</b>
<i>Transportation services</i>	-13 796	-14 508	-15 555	-1 292	-1 320	-1 294	-1 222	-1 294	5.9
Freight	-7 500	-7 776	-8 044	-653	-617	-631	-604	-631	4.5
Passenger and other	-6 296	-6 732	-7 511	-639	-703	-663	-618	-663	7.3
<i>Travel services</i>	-14 507	-15 090	-15 947	-1 251	-1 409	-1 547	-1 429	-1 547	8.3
<i>Other services</i>	-11 012	-11 480	-12 974	-1 094	-1 140	-1 134	-1 012	-1 134	12.1
<b>Memorandum items:</b>									
Tourism related service credits(c)	25 584	26 728	29 517	2 382	2 269	2 630	2 365	2 630	11.2
Tourism related service debits(c)	-20 287	-21 374	-23 008	-1 851	-2 073	-2 175	-2 010	-2 175	8.2

(a) For sign conventions, see paragraph 10 of the Explanatory Notes.

(b) For more detailed trade in services components, see table 11.

(c) For a more detailed explanation of tourism related services, see paragraphs 16 and 17 of the Explanatory Notes.

	Oct 2006	Nov 2006	Dec 2006	Jan 2007	Feb 2007	Mar 2007	Apr 2007	May 2007	Jun 2007	Jul 2007
	\$m	\$m	\$m	\$m	\$m	\$m	\$m	\$m	\$m	\$m
SEASONALLY ADJUSTED										
<b>Services credits</b>	<b>3 800</b>	<b>3 800</b>	<b>3 874</b>	<b>3 899</b>	<b>3 905</b>	<b>3 967</b>	<b>3 951</b>	<b>3 994</b>	<b>4 020</b>	<b>4 019</b>
<i>Transportation services</i>	725	724	730	738	741	747	744	758	762	772
Freight	54	53	53	51	49	49	49	49	49	48
Passenger and other	671	671	677	687	691	698	695	710	713	725
<i>Travel services</i>	2 062	2 054	2 119	2 134	2 133	2 184	2 174	2 200	2 223	2 203
<i>Other services(b)</i>	1 014	1 022	1 025	1 027	1 032	1 036	1 034	1 036	1 035	1 044
<b>Services debits</b>	<b>-3 689</b>	<b>-3 661</b>	<b>-3 769</b>	<b>-3 728</b>	<b>-3 749</b>	<b>-3 764</b>	<b>-3 810</b>	<b>-3 816</b>	<b>-3 822</b>	<b>-3 826</b>
<i>Transportation services</i>	-1 312	-1 293	-1 352	-1 298	-1 342	-1 323	-1 321	-1 303	-1 291	-1 282
Freight	-720	-691	-677	-678	-675	-672	-669	-660	-653	-653
Passenger and other	-592	-602	-676	-620	-667	-651	-651	-643	-638	-630
<i>Travel services</i>	-1 317	-1 300	-1 337	-1 336	-1 304	-1 336	-1 369	-1 386	-1 394	-1 389
<i>Other services(b)</i>	-1 060	-1 068	-1 080	-1 094	-1 103	-1 105	-1 120	-1 128	-1 137	-1 155
<b>Memorandum items:</b>										
Tourism related service credits(c)	2 412	2 408	2 473	2 495	2 508	2 562	2 558	2 569	2 595	2 574
Tourism related service debits(c)	-1 857	-1 853	-2 023	-1 862	-1 928	-1 980	-2 015	-1 979	-2 010	-1 974

TREND ESTIMATES										
<b>Services credits</b>	<b>3 782</b>	<b>3 823</b>	<b>3 859</b>	<b>3 892</b>	<b>3 921</b>	<b>3 946</b>	<b>3 969</b>	<b>3 990</b>	<b>4 008</b>	<b>4 022</b>
<i>Transportation services</i>	719	726	731	736	741	745	751	756	762	766
Freight	54	53	52	51	50	49	49	49	48	48
Passenger and other	665	673	679	685	691	696	702	708	714	718
<i>Travel services</i>	2 048	2 076	2 102	2 127	2 149	2 168	2 183	2 197	2 208	2 216
<i>Other services</i>	1 016	1 021	1 025	1 028	1 031	1 033	1 035	1 037	1 038	1 040
<b>Services debits</b>	<b>-3 658</b>	<b>-3 689</b>	<b>-3 718</b>	<b>-3 743</b>	<b>-3 761</b>	<b>-3 778</b>	<b>-3 794</b>	<b>-3 809</b>	<b>-3 821</b>	<b>-3 833</b>
<i>Transportation services</i>	-1 292	-1 307	-1 320	-1 328	-1 328	-1 322	-1 314	-1 306	-1 297	-1 291
Freight	-684	-687	-686	-682	-676	-670	-666	-661	-657	-653
Passenger and other	-607	-619	-634	-645	-651	-652	-649	-644	-639	-637
<i>Travel services</i>	-1 309	-1 313	-1 318	-1 324	-1 333	-1 346	-1 360	-1 374	-1 386	-1 397
<i>Other services</i>	-1 057	-1 069	-1 080	-1 091	-1 100	-1 110	-1 119	-1 129	-1 138	-1 146
<b>Memorandum items:</b>										
Tourism related service credits(c)	2 393	2 427	2 461	2 493	2 520	2 542	2 559	2 573	2 582	2 589
Tourism related service debits(c)	-1 874	-1 894	-1 913	-1 932	-1 950	-1 967	-1 980	-1 990	-1 996	-2 006

(a) For sign conventions, see paragraph 10 of the Explanatory Notes.

(b) In using these seasonally adjusted series, care should be exercised because of the difficulties associated with reliably estimating the seasonal pattern.

(c) For a more detailed explanation of tourism related services, see paragraphs 16 and 17 of the Explanatory Notes.

	CREDITS				DEBITS			
	Sep Qtr	Dec Qtr	Mar Qtr	Jun Qtr	Sep Qtr	Dec Qtr	Mar Qtr	Jun Qtr
	2006	2006	2007	2007	2006	2006	2007	2007
	\$m	\$m	\$m	\$m	\$m	\$m	\$m	\$m
<b>Services</b>	<b>11 092</b>	<b>11 686</b>	<b>11 942</b>	<b>11 513</b>	<b>-11 096</b>	<b>-11 333</b>	<b>-10 811</b>	<b>-11 236</b>
Transportation services	2 091	2 257	2 280	2 135	-3 854	-4 044	-3 761	-3 896
Passenger(c)	1 930	2 094	2 139	1 983	-1 683	-1 661	-1 575	-1 795
Freight	161	163	141	152	-1 966	-2 176	-1 986	-1 916
Other(c)	np	np	np	np	-205	-207	-200	-185
Travel services	6 040	6 250	6 662	6 268	-4 181	-3 958	-3 797	-4 011
Business	615	591	635	623	-661	-613	-697	-659
Personal	5 425	5 659	6 027	5 645	-3 520	-3 345	-3 100	-3 352
Education-related	2 860	2 480	2 833	3 119	-265	-166	-172	-177
Other	2 565	3 179	3 194	2 526	-3 255	-3 179	-2 928	-3 175
Communication services(d)	257	192	188	178	-244	-204	-198	-214
Construction services	31	33	36	44	—	—	—	—
Insurance services	176	176	176	176	-225	-225	-225	-225
Financial services	251	251	251	251	-150	-150	-150	-150
Computer and information services	358	420	337	360	-331	-375	-341	-425
Royalties and license fees	204	218	221	251	-750	-856	-811	-832
Other business services	1 318	1 534	1 416	1 495	-943	-1 039	-985	-1 011
Merchanting and other trade-related	186	192	193	214	-52	-55	-52	-48
Operational leasing	10	10	10	10	-212	-230	-208	-191
Miscellaneous business, professional and technical	1 122	1 332	1 213	1 271	-679	-754	-725	-772
Legal, accounting, management consulting and public relations	193	212	207	227	-83	-104	-96	-134
Advertising, market research and public opinion polling	56	57	58	65	-39	-36	-40	-67
Research and development	127	141	123	138	-38	-37	-29	-30
Architectural, engineering and other technical services	294	349	355	347	-137	-123	-141	-119
Agriculture, mining and on-site processing	82	87	88	86	-34	-45	-56	-76
Services between affiliated enterprises n.i.e.	248	356	258	286	-225	-272	-204	-200
Other	122	130	124	122	-123	-137	-159	-146
Personal, cultural, and recreational services	152	154	159	138	-226	-269	-340	-232
Audiovisual and related services	36	38	51	35	-191	-224	-266	-198
Personal, cultural and recreational services	116	116	108	103	-35	-45	-74	-34
Government services n.i.e.	214	201	216	217	-192	-213	-203	-240
<b>Memorandum items:</b>								
Tourism related services(e)	7 030	7 383	7 880	7 224	-5 958	-5 714	-5 462	-5 874

— nil or rounded to zero (including null cells)

np not available for publication but included in totals where applicable, unless otherwise indicated

(a) For sign conventions, see paragraph 10 of the Explanatory Notes.

(b) For more information see paragraphs 14 and 15 of the Explanatory Notes.

(c) Passenger transportation credits include other transportation services credits.

(d) Communications services includes other services n.i.e.

(e) For a more detailed explanation of tourism related services, see paragraphs 16 and 17 of the Explanatory Notes.

	May	Jun	Jul	Per cent	1 MONTH	
	2007	2007	2007	of total	ENDED JULY	
	\$m	\$m	\$m	merchandise	2006	2007
			exports(a)	%	\$m	\$m
MAJOR COMMODITIES						
011 Meat of bovine animals	381	374	370	2.5	403	370
041 Wheat	146	116	222	1.5	289	222
268 Wool and other animal hair	260	270	183	1.3	203	183
281 Iron ore and concentrates	1 370	1 287	1 288	8.9	1 368	1 288
285 Aluminium ore and concentrates	554	470	469	3.2	590	469
321 Coal, not agglomerated	1 788	1 682	1 607	11.1	2 018	1 607
333 Crude petroleum oils	477	654	651	4.5	823	651
334 Refined petroleum oils	299	249	309	2.1	213	309
343 Natural gas	388	388	383	2.6	524	383
684 Aluminium	600	430	578	4.0	595	578
781 Passenger motor vehicles	278	211	256	1.8	132	256
971 Gold, non-monetary	1 026	1 112	1 003	6.9	815	1 003

## SECTION AND DIVISION OF THE SITC

0	Food and live animals(b)					
00	Live animals other than fish, crustaceans, molluscs and aquatic invertebrates	77	101	74	0.5	75
01	Meat and meat preparations	560	528	521	3.6	579
02	Dairy products and birds' eggs	192	164	168	1.2	190
03	Fish (not marine mammals), crustaceans, molluscs and aquatic invertebrates, and preparations thereof(b)	95	82	75	0.5	92
04	Cereals and cereal preparations(b)	305	199	353	2.4	445
05	Vegetables and fruit	117	124	126	0.9	154
06	Sugars, sugar preparations and honey(b)	13	13	22	0.2	27
07	Coffee, tea, cocoa, spices, and manufactures thereof	20	21	24	0.2	21
08	Feeding stuff for animals (excl. unmilled cereals)(b)	62	60	56	0.4	75
09	Miscellaneous edible products and preparations	40	38	38	0.3	41
	<i>Total Food and live animals</i>	<i>1 481</i>	<i>1 329</i>	<i>1 459</i>	<i>10.0</i>	<i>1 698</i>
1	Beverages and tobacco					
11	Beverages	277	254	294	2.0	234
12	Tobacco and tobacco manufactures	14	11	16	0.1	11
	<i>Total Beverages and tobacco</i>	<i>291</i>	<i>265</i>	<i>310</i>	<i>2.1</i>	<i>244</i>
2	Crude materials, inedible, except fuels(b)					
21	Hides, skins and furskins, raw(b)	65	58	54	0.4	48
22	Oil seeds and oleaginous fruits	5	6	14	0.1	18
23	Crude rubber (incl. synthetic and reclaimed)	—	—	—	—	—
24	Cork and wood	130	94	96	0.7	99
25	Pulp and waste paper	18	17	19	0.1	12
26	Textile fibres and their wastes (not manufactured into yarn or fabric)(b)	332	342	238	1.6	305
27	Crude fertilisers (excl. those of Division 56) and crude minerals (excl. coal, petroleum and precious stones)	59	48	34	0.2	39
28	Metalliferous ores and metal scrap(b)	3 060	2 838	3 148	21.7	2 990
29	Crude animal and vegetable materials, n.e.s.	21	17	21	0.1	19
	<i>Total Crude materials, inedible, except fuels</i>	<i>3 691</i>	<i>3 421</i>	<i>3 625</i>	<i>25.0</i>	<i>3 530</i>
3	Mineral fuels, lubricants and related materials					
32	Coal, coke and briquettes	1 793	1 694	1 607	11.1	2 019
33	Petroleum, petroleum products and related materials	777	904	962	6.6	1 038
34	Gas, natural and manufactured	454	494	453	3.1	599
	<i>Total Mineral fuels, lubricants and related materials</i>	<i>3 024</i>	<i>3 091</i>	<i>3 022</i>	<i>20.8</i>	<i>3 656</i>

— nil or rounded to zero (including null cells)

(a) Per cent of total merchandise exports is calculated for the most recent month.

(b) Excludes exports commodities subject to a confidentiality restriction. These are included in Division 98.

				Per cent of total merchandise exports(a)	1 MONTH ENDED JULY		
	May 2007	Jun 2007	Jul 2007		2006	2007	
	\$m	\$m	\$m	%	\$m	\$m	
SECTION AND DIVISION OF THE SITC							
4	Animal and vegetable oils, fats and waxes(b)						
41	Animal oils and fats	25	23	17	0.1	15	17
42	Fixed vegetable fats and oils, crude, refined or fractionated(b)	6	6	5	—	5	5
43	Fats and oils (processed), waxes and inedible mixtures or preparations, of animal or vegetable origin, n.e.s.	5	6	7	—	5	7
	<i>Total Animal and vegetable oils, fats and waxes</i>	37	35	28	0.2	25	28
5	Chemicals and related products, n.e.s.(b)						
51	Organic chemicals(b)	7	7	6	—	6	6
52	Inorganic chemicals(b)	76	53	64	0.4	69	64
53	Dyeing, tanning and colouring materials	55	59	52	0.4	56	52
54	Medicinal and pharmaceutical products	318	357	394	2.7	342	394
55	Essential oils and resinoids and perfume materials; toilet, polishing and cleansing preparations	45	45	48	0.3	39	48
56	Fertilisers (excl. crude)	16	6	14	0.1	9	14
57	Plastics in primary forms(b)	29	29	28	0.2	20	28
58	Plastics in non-primary forms	36	30	30	0.2	30	30
59	Chemical materials and products, n.e.s.	71	72	80	0.6	61	80
	<i>Total Chemicals and related products, n.e.s.</i>	654	657	715	4.9	633	715
6	Manufactured goods classified chiefly by material(b)						
61	Leather, leather manufactures, and dressed furskins, n.e.s.	36	24	32	0.2	35	32
62	Rubber manufactures, n.e.s.	27	20	18	0.1	18	18
63	Cork and wood manufactures (excl. furniture)(b)	16	14	13	0.1	18	13
64	Paper, paperboard, and articles of paper pulp, of paper or of paperboard	67	60	61	0.4	63	61
65	Textile yarn, fabrics, made-up articles, nes, and related products	37	34	40	0.3	39	40
66	Non-metallic mineral manufactures, n.e.s.(b)	72	54	62	0.4	75	62
67	Iron and steel(b)	111	96	71	0.5	74	71
68	Non-ferrous metals	1 321	993	1 241	8.5	1 103	1 241
69	Manufactures of metals, n.e.s.	93	82	84	0.6	80	84
	<i>Total Manufactured goods classified chiefly by material</i>	1 781	1 378	1 621	11.2	1 505	1 621
7	Machinery and transport equipment(b)						
71	Power generating machinery and equipment	104	100	103	0.7	114	103
72	Machinery specialised for particular industries	138	140	148	1.0	126	148
73	Metal working machinery	16	20	15	0.1	16	15
74	General industrial machinery and equipment, n.e.s. and machine parts, n.e.s.(b)	154	136	154	1.1	142	154
75	Office machines and automatic data processing machines	110	110	120	0.8	96	120
76	Telecommunications and sound recording and reproducing apparatus and equipment	61	73	66	0.5	95	66
77	Electrical machinery, apparatus, appliances, parts (incl. non-electrical counterparts of electrical domestic equipment)	160	153	156	1.1	155	156
78	Road vehicles (incl. air-cushion vehicles)	387	304	389	2.7	213	389
79	Transport equipment (excl. road vehicles)	91	86	85	0.6	77	85
	<i>Total Machinery and transport equipment</i>	1 220	1 121	1 234	8.5	1 032	1 234

— nil or rounded to zero (including null cells)

(a) Per cent of total merchandise exports is calculated for the most recent month.

(b) Excludes exports commodities subject to a confidentiality restriction. These are included in Division 98.

				Per cent of total merchandise exports(a)	1 MONTH ENDED JULY .....	
	May	Jun	Jul		2006	2007
	2007	2007	2007			
	\$m	\$m	\$m	%	\$m	\$m
SECTION AND DIVISION OF THE SITC						
8	Miscellaneous manufactured articles(b)					
81	Prefabricated buildings; sanitary, plumbing, heating and lighting fixtures and fittings, n.e.s.					
	11	11	14	0.1	12	14
82	Furniture, parts thereof; bedding, mattresses, mattress supports, cushions and similar stuffed furnishings					
	9	8	8	0.1	12	8
83	Travel goods, handbags and similar containers					
	2	3	2	—	2	2
84	Articles of apparel and clothing accessories					
	19	16	19	0.1	22	19
85	Footwear(b)					
	4	4	4	—	3	4
87	Professional, scientific and controlling instruments and apparatus, n.e.s.					
	159	162	153	1.1	140	153
88	Photographic apparatus, equipment and supplies and optical goods, n.e.s.; watches and clocks					
	24	25	26	0.2	31	26
89	Miscellaneous manufactured articles, n.e.s.					
	206	201	208	1.4	195	208
	<i>Total Miscellaneous manufactured articles</i>					
	433	430	435	3.0	418	435
9	Commodities and transactions not classified elsewhere in the SITC(c)					
93	Special transactions and commodities not classified according to kind					
	149	125	110	0.8	148	110
95	Gold coin whether or not legal tender, and other coin being legal tender					
	11	14	10	0.1	5	10
96	Coin (excl. gold coin), not being legal tender					
	—	—	—	—	—	—
97	Gold, non-monetary (excl. gold ores and concentrates)					
	1 026	1 112	1 003	6.9	815	1 003
98	Combined confidential items excl. some of SITC 280 (exports only) and some of SITCs 510 and 520 (imports only)(c)					
	927	905	953	6.6	604	953
	<i>Total commodities and transactions not classified elsewhere in the SITC</i>					
	2 113	2 156	2 076	14.3	1 572	2 076
<b>Total merchandise exports</b>						
	<b>14 726</b>	<b>13 885</b>	<b>14 523</b>	<b>100.0</b>	<b>14 313</b>	<b>14 523</b>
Balance of Payments Adjustments						
	152	243	26	. .	154	26
Goods Credits (exports) on a Balance of Payments Basis						
	14 878	14 128	14 549	. .	14 467	14 549

. . not applicable

— nil or rounded to zero (including null cells)

(a) Per cent of total merchandise exports is calculated for the most recent month.

(b) Excludes exports commodities subject to a confidentiality restriction. These are included in Division 98.

(c) Includes exports commodities subject to a confidentiality restriction.

				Per cent	1 MONTH	
	May	Jun	Jul	of total	ENDED JULY	
	2007	2007	2007	merchandise	2006	2007
	\$m	\$m	\$m	imports(a)	\$m	\$m
				%		
MAJOR COMMODITIES						
333 Crude petroleum oils	1 238	1 165	1 182	7.7	1 014	1 182
334 Refined petroleum oils	778	767	592	3.9	721	592
542 Medicaments	594	550	593	3.9	560	593
641 Paper and paperboard	189	153	192	1.3	172	192
752 Automatic data processing machines	626	656	583	3.8	557	583
759 Parts and accessories of office machines	201	202	189	1.2	180	189
764 Telecommunications equipment	533	546	503	3.3	520	503
781 Passenger motor vehicles	1 051	1 177	1 045	6.8	1 073	1 045
782 Motor vehicles for the transport of goods	526	484	426	2.8	312	426
784 Parts and accessories of motor vehicles	217	217	205	1.3	213	205
792 Aircraft and associated equipment	510	361	99	0.6	181	99
971 Gold, non-monetary	421	648	708	4.6	577	708

## SECTION AND DIVISION OF THE SITC

0	Food and live animals					
00	Live animals other than fish, crustaceans, molluscs and aquatic invertebrates	9	7	7	—	10 7
01	Meat and meat preparations	53	37	30	0.2	23 30
02	Dairy products and birds' eggs	41	31	33	0.2	36 33
03	Fish (not marine mammals), crustaceans, molluscs and aquatic invertebrates, and preparations thereof	86	74	81	0.5	75 81
04	Cereals and cereal preparations	42	41	49	0.3	44 49
05	Vegetables and fruit	98	99	110	0.7	98 110
06	Sugars, sugar preparations and honey	20	19	18	0.1	15 18
07	Coffee, tea, cocoa, spices, and manufactures thereof	67	63	81	0.5	67 81
08	Feeding stuff for animals (excl. unmilled cereals)	38	36	40	0.3	34 40
09	Miscellaneous edible products and preparations	103	92	119	0.8	93 119
	<i>Total food and live animals</i>	557	498	568	3.7	495 568
1	Beverages and tobacco					
11	Beverages	71	71	85	0.6	78 85
12	Tobacco and tobacco manufactures	17	17	17	0.1	16 17
	<i>Total beverages and tobacco</i>	88	87	102	0.7	94 102
2	Crude materials, inedible, except fuels					
21	Hides, skins and furskins, raw	—	—	—	—	—
22	Oil seeds and oleaginous fruits	4	17	6	—	3 6
23	Crude rubber (incl. synthetic and reclaimed)	13	12	14	0.1	15 14
24	Cork and wood	55	48	50	0.3	48 50
25	Pulp and waste paper	19	21	21	0.1	26 21
26	Textile fibres and their wastes (not manufactured into yarn or fabric)	12	11	12	0.1	11 12
27	Crude fertilisers (excl. those of Division 56) and crude minerals (excl. coal, petroleum and precious stones)	11	16	15	0.1	9 15
28	Metalliferous ores and metal scrap	39	42	77	0.5	23 77
29	Crude animal and vegetable materials, n.e.s.	21	19	20	0.1	19 20
	<i>Total crude materials, inedible, except fuels</i>	174	187	214	1.4	152 214
3	Mineral fuels, lubricants and related materials(b)					
32	Coal, coke and briquettes	2	1	2	—	3 2
33	Petroleum, petroleum products and related materials(b)	2 060	1 975	1 809	11.8	1 765 1 809
34	Gas, natural and manufactured	66	101	72	0.5	98 72
	<i>Total mineral fuels, lubricants and related materials</i>	2 128	2 077	1 884	12.3	1 866 1 884

— nil or rounded to zero (including null cells)

(a) Per cent of total merchandise imports is calculated for the most recent month.

(b) Excludes imports commodities subject to a confidentiality restriction. These are included in Division 98.



				Per cent of total merchandise imports(a)	1 MONTH ENDED JULY .....	
	May 2007	Jun 2007	Jul 2007		2006	2007
	\$m	\$m	\$m	%	\$m	\$m
SECTION AND DIVISION OF THE SITC						
4	Animal and vegetable oils, fats and waxes					
41	Animal oils and fats	2	1	2	—	1 2
42	Fixed vegetable fats and oils, crude, refined or fractionated	53	27	48	0.3	30 48
43	Fats and oils (processed), waxes and inedible mixtures or preparations, of animal or vegetable origin, n.e.s.	5	4	6	—	4 6
	<i>Total animal and vegetable oils, fats and waxes</i>	60	33	56	0.4	35 56
5	Chemicals and related products, n.e.s.(b)					
51	Organic chemicals	284	214	287	1.9	255 287
52	Inorganic chemicals(b)	86	83	96	0.6	77 96
53	Dyeing, tanning and colouring materials	47	46	48	0.3	47 48
54	Medicinal and pharmaceutical products	741	681	720	4.7	650 720
55	Essential oils and resinoids and perfume materials; toilet, polishing and cleansing preparations	125	113	126	0.8	125 126
56	Fertilisers (excl. crude)	116	69	89	0.6	44 89
57	Plastics in primary forms	157	133	138	0.9	122 138
58	Plastics in non-primary forms	109	99	104	0.7	99 104
59	Chemical materials and products, n.e.s.	149	152	145	1.0	139 145
	<i>Total chemicals and related products, n.e.s.</i>	1 816	1 590	1 754	11.5	1 558 1 754
6	Manufactured goods classified chiefly by material(b)					
61	Leather, leather manufactures, and dressed furskins, n.e.s.	13	14	14	0.1	11 14
62	Rubber manufactures, n.e.s.(b)	213	200	212	1.4	191 212
63	Cork and wood manufactures (excl. furniture)	45	47	48	0.3	48 48
64	Paper, paperboard, and articles of paper pulp, of paper or of paperboard(b)	239	201	247	1.6	217 247
65	Textile yarn, fabrics, made-up articles n.e.s. and related products	207	187	201	1.3	200 201
66	Non-metallic mineral manufactures, n.e.s.	186	190	194	1.3	177 194
67	Iron and steel(b)	309	323	331	2.2	243 331
68	Non-ferrous metals(b)	124	106	117	0.8	120 117
69	Manufactures of metals, n.e.s.(b)	381	375	395	2.6	349 395
	<i>Total manufactured goods classified chiefly by material</i>	1 717	1 644	1 758	11.5	1 555 1 758
7	Machinery and transport equipment(b)					
71	Power generating machinery and equipment	271	318	353	2.3	278 353
72	Machinery specialised for particular industries	578	570	582	3.8	519 582
73	Metal working machinery	70	71	57	0.4	59 57
74	General industrial machinery and equipment, n.e.s. and machine parts, n.e.s.	786	688	740	4.8	729 740
75	Office machines and automatic data processing machines	887	914	822	5.4	787 822
76	Telecommunications and sound recording and reproducing apparatus and equipment	828	840	820	5.4	821 820
77	Electrical machinery, apparatus, appliances, parts (incl. non-electrical counterparts of electrical domestic equipment)(b)	753	768	789	5.2	670 789
78	Road vehicles (incl. air-cushion vehicles)	1 941	2 036	1 842	12.1	1 740 1 842
79	Transport equipment (excl. road vehicles)	633	455	157	1.0	235 157
	<i>Total machinery and transport equipment</i>	6 748	6 659	6 163	40.3	5 839 6 163

— nil or rounded to zero (including null cells)

(a) Per cent of total merchandise imports is calculated for the most recent month.

(b) Excludes imports commodities subject to a confidentiality restriction. These are included in Division 98.

				Per cent of total merchandise imports(a)	1 MONTH ENDED JULY	
	May	Jun	Jul		.....	
	2007	2007	2007		2006	2007
	\$m	\$m	\$m	%	\$m	\$m
SECTION AND DIVISION OF THE SITC						
8	Miscellaneous manufactured articles(b)					
81	Prefabricated buildings; sanitary, plumbing, heating and lighting fixtures and fittings, n.e.s.					
	49	46	54	0.4	46	54
82	Furniture, parts thereof; bedding, mattresses, mattress supports, cushions and similar stuffed furnishings					
	186	173	203	1.3	187	203
83	Travel goods, handbags and similar containers					
	45	48	59	0.4	47	59
84	Articles of apparel and clothing accessories					
	305	317	405	2.7	396	405
85	Footwear					
	66	80	112	0.7	106	112
87	Professional, scientific and controlling instruments and apparatus, n.e.s.					
	369	370	362	2.4	349	362
88	Photographic apparatus, equipment and supplies and optical goods, n.e.s.; watches and clocks(b)					
	114	102	115	0.8	110	115
89	Miscellaneous manufactured articles, n.e.s.					
	769	822	731	4.8	772	731
	<i>Total miscellaneous manufactured articles</i>					
	1 902	1 959	2 042	13.4	2 012	2 042
9	Commodities and transactions not classified elsewhere in the SITC(c)					
93	Special transactions and commodities not classified according to kind					
	4	3	3	—	3	3
95	Gold coin whether or not legal tender, and other coin being legal tender					
	—	—	—	—	—	—
96	Coin (excl. gold coin), not being legal tender					
	—	—	—	—	—	—
97	Gold, non-monetary (excl. gold ores and concentrates)					
	421	648	708	4.6	577	708
98	Combined confidential items excl. some of SITC 280 (exports only) and some of SITCs 510 and 520 (imports only)(c)					
	23	23	23	0.1	7	23
	<i>Total commodities and transactions not classified elsewhere in the SITC</i>					
	447	674	734	4.8	587	734
	<b>Total merchandise imports</b>					
	<b>15 637</b>	<b>15 409</b>	<b>15 275</b>	<b>100.0</b>	<b>14 192</b>	<b>15 275</b>
	Balance of Payments Adjustment					
	192	255	213	. .	228	213
	Goods Debits (imports) on a Balance of Payments Basis					
	15 829	15 664	15 488	. .	14 420	15 488

. . not applicable

— nil or rounded to zero (including null cells)

(a) Per cent of total merchandise imports is calculated for the most recent month.

(b) Excludes imports commodities subject to a confidentiality restriction. These are included in Division 98.

(c) Includes imports commodities subject to a confidentiality restriction.

	EXPORTS				IMPORTS				BALANCE OF MERCHANDISE TRADE	
	2006-07	July	1 month ended	1 month ended	2006-07	July	1 month ended	1 month ended	2006-07	1 month ended
		2007	July	July		July	2007	July		July
	\$m	\$m	\$m	\$m	\$m	\$m	\$m	\$m	\$m	\$m
Belgium	1 320	130	74	130	1 606	126	131	126	-286	4
Brazil	856	85	87	85	859	63	70	63	-3	22
Canada	1 768	127	177	127	2 077	157	135	157	-309	-30
China	22 800	2 067	1 807	2 067	27 137	2 375	2 038	2 375	-4 338	-308
Denmark	189	12	16	12	1 138	69	100	69	-949	-57
Egypt(b)	337	45	26	45	17	1	1	1	320	43
Fiji	383	35	36	35	148	10	14	10	235	25
Finland	1 620	150	102	150	848	69	62	69	773	81
France	1 368	235	124	235	3 901	319	281	319	-2 534	-84
Germany	1 443	106	90	106	9 274	820	673	820	-7 831	-714
Hong Kong (Sar of China)	3 038	235	248	235	1 419	127	153	127	1 619	108
India	10 104	823	810	823	1 314	119	95	119	8 790	704
Indonesia	4 240	304	442	304	4 648	295	265	295	-408	9
Iran	204	10	19	10	41	3	6	3	163	7
Iraq	96	—	39	—	36	—	20	—	61	—
Ireland	209	18	16	18	2 120	160	190	160	-1 911	-142
Israel	188	9	16	9	640	44	61	44	-451	-35
Italy	1 744	109	114	109	4 869	421	404	421	-3 125	-311
Japan	32 654	2 816	3 059	2 816	17 404	1 401	1 508	1 401	15 250	1 415
Korea, Republic of	13 077	1 081	1 167	1 081	6 012	450	480	450	7 065	632
Kuwait	493	52	16	52	231	1	35	1	262	51
Malaysia	3 103	243	253	243	6 591	777	474	777	-3 488	-534
Mexico	837	88	49	88	1 102	88	93	88	-266	—
Netherlands	2 974	208	227	208	1 495	110	116	110	1 478	98
New Zealand	9 435	832	722	832	5 613	490	479	490	3 821	342
Pakistan	320	16	20	16	151	11	11	11	169	5
Papua New Guinea	1 522	182	82	182	2 215	236	136	236	-693	-54
Philippines	1 056	74	99	74	753	76	58	76	303	-2
Saudi Arabia	2 024	137	125	137	940	61	95	61	1 084	76
Singapore	4 629	261	466	261	10 122	724	927	724	-5 493	-463
South Africa	2 316	198	241	198	1 402	120	122	120	914	78
Spain	1 241	57	102	57	1 624	138	101	138	-382	-81
Sweden	351	34	31	34	2 287	191	218	191	-1 936	-157
Switzerland	1 124	247	23	247	1 917	166	151	166	-793	81
Taiwan	6 185	531	473	531	4 407	370	332	370	1 779	162
Thailand	4 256	385	394	385	7 210	581	528	581	-2 953	-196
Turkey	533	94	13	94	437	38	34	38	96	56
United Arab Emirates	2 390	465	109	465	1 750	189	267	189	640	276
United Kingdom	6 154	445	701	445	7 407	1 075	467	1 075	-1 252	-630
United States of America	9 803	836	797	836	24 927	1 817	1 939	1 817	-15 124	-981
Viet Nam	1 630	98	246	98	4 522	277	378	277	-2 892	-179
Other Countries	8 101	644	652	644	8 178	713	542	713	-77	-68
<b>Total</b>	<b>168 117</b>	<b>14 523</b>	<b>14 313</b>	<b>14 523</b>	<b>180 790</b>	<b>15 275</b>	<b>14 192</b>	<b>15 275</b>	<b>-12 673</b>	<b>-751</b>
APEC	121 028	10 224	10 555	10 224	128 468	10 426	10 035	10 426	-7 440	-201
ASEAN	19 044	1 380	1 911	1 380	34 961	2 838	2 662	2 838	-15 917	-1 457
Developing Countries	87 381	7 511	7 331	7 511	84 694	7 058	6 675	7 058	2 687	452
Least Developed Countries	1 558	127	123	127	246	19	21	19	1 312	108
European Union(c)	19 001	1 532	1 633	1 532	38 952	3 684	2 927	3 684	-19 951	-2 152
OECD	88 236	7 652	7 647	7 652	99 204	8 352	7 792	8 352	-10 968	-700

— nil or rounded to zero (including null cells)

(a) See Time series spreadsheets for details of all countries.

(b) Exports of Alumina to Egypt are excluded from country total and included in the 'Other Countries' category.

(c) From July 2004, European Union includes 25 member countries.

	2006-07	July 2007	1 MONTH ENDED JULY	
			2006	2007
	\$m	\$m	\$m	\$m
EXPORTS (a)				
New South Wales	28 117	2 516	2 569	2 516
Victoria	20 039	1 824	1 607	1 824
Queensland	35 419	2 828	3 137	2 828
South Australia	9 019	916	657	916
Western Australia	60 506	5 196	5 046	5 196
Tasmania	3 712	294	282	294
Northern Territory	4 012	287	382	287
Australian Capital Territory	8	—	—	—
State not available for publication(b)	809	69	74	69
Re-exports	6 477	594	560	594
<b>Total exports</b>	<b>168 117</b>	<b>14 523</b>	<b>14 313</b>	<b>14 523</b>
IMPORTS				
New South Wales	69 789	5 864	5 593	5 864
Victoria	51 314	4 093	4 096	4 093
Queensland	27 205	2 488	2 027	2 488
South Australia	6 582	511	481	511
Western Australia	22 121	2 089	1 698	2 089
Tasmania	614	46	77	46
Northern Territory	2 848	183	220	183
Australian Capital Territory	317	2	—	2
<b>Total imports</b>	<b>180 790</b>	<b>15 275</b>	<b>14 192</b>	<b>15 275</b>

— nil or rounded to zero (including null cells)

(a) State in which the final stage of production or manufacture occurs.

(b) Exports of Alumina to Bahrain, Egypt and Iceland are excluded from the state totals and included in 'State not available for publication category'.

## PERIOD AVERAGE EXCHANGE RATES(a): Per Australian dollar

<i>Period</i>	<i>United States dollar</i>	<i>UK pound sterling</i>	<i>Euro</i>	<i>Japanese yen</i>	<i>Trade-weighted index of value of the \$A(b)</i>
FINANCIAL YEAR					
<b>2004-05</b>	0.7529	0.4052	0.5918	80.45	62.7
<b>2005-06</b>	0.7474	0.4205	0.6143	85.90	63.3
<b>2006-07</b>	0.7863	0.4066	0.6018	93.21	64.8
MONTHS					
<b>2006</b>					
May	0.7633	0.4089	0.5982	85.33	63.2
June	0.7402	0.4012	0.5842	84.80	62.0
July	0.7514	0.4075	0.5920	86.89	63.0
August	0.7630	0.4034	0.5958	88.45	63.7
September	0.7566	0.4009	0.5938	88.58	63.2
October	0.7539	0.4021	0.5975	89.46	63.2
November	0.7721	0.4040	0.5995	90.52	64.0
December	0.7861	0.4002	0.5949	92.05	64.4
<b>2007</b>					
January	0.7839	0.4002	0.6027	94.28	64.7
February	0.7823	0.3993	0.5981	94.29	64.4
March	0.7919	0.4067	0.5980	92.90	64.8
April	0.8263	0.4156	0.6117	98.17	67.1
May	0.8252	0.4157	0.6103	99.58	67.0
June	0.8423	0.4238	0.6274	103.34	68.5
July	0.8675	0.4266	0.6325	105.47	69.7

- (a) These exchange rates and the trade-weighted index are derived using rates provided by the Reserve Bank of Australia in respect of each trading day.
- (b) May 1970 = 100. The Trade-weighted index is reweighted annually on 1 October and on special occasions as required.

## EXPLANATORY NOTES

### INTRODUCTION

**1** This publication presents preliminary estimates of Australia's international trade in goods and services on a balance of payments basis and merchandise import and export statistics on a recorded trade basis.

**2** Merchandise trade statistics on a recorded trade basis are compiled from information submitted by exporters and importers or their agents to the Australian Customs Service (ACS). Adjustments for coverage, timing and valuation are made to recorded trade data to convert them to a balance of payments basis. The main source for services data is the quarterly Survey of International Trade in Services.

**3** More comprehensive quarterly estimates of Australia's trade in goods and services, together with comprehensive details of Australia's balance of payments are included in the quarterly publication, *Balance of Payments and International Investment Position, Australia* (cat. no. 5302.0). Detailed monthly statistics on merchandise trade are available on Time Series Spreadsheets or by subscription to tailored services.

### CONCEPTS, SOURCES AND METHODS

**4** The conceptual framework used in compiling Australia's merchandise trade statistics can be found in *International Merchandise Trade, Australia: Concepts, Sources and Methods, 2001* (cat. no. 5489.0).

**5** The conceptual framework used in compiling Australia's balance of payments statistics is based on the Fifth Edition of the International Monetary Fund's *Balance of Payments Manual* (BPM5,1993). Descriptions of the underlying concepts and structure of the balance of payments and the sources, methods and terms used in compiling the estimates are presented in *Balance of Payments and International Investment Position, Australia: Concepts, Sources and Methods, 1998* (cat. no. 5331.0). To bring merchandise trade statistics on a recorded trade basis to a balance of payments basis, timing adjustments are made to ensure that the transaction is recorded in the period in which ownership changed, rather than in the period in which the transaction was recorded by ACS. Adjustments are also made to imports to take account of distortions which arise when significant changes occur in the volume of import entries lodged but not yet processed by ACS in a given month. Chapter 6 of cat. no. 5331.0 provides more detail on the relationship between statistics on international merchandise trade on a recorded trade basis and on a balance of payments basis.

**6** Both of the Concepts, Sources and Methods publications are available to download for free from the ABS website. Select *Methods, Classifications, Concepts & Standards*, then choose *ABS concepts, classifications and statistical standards* and then the catalogue numbers as above.

### SEASONAL ADJUSTMENT

**7** Monthly original estimates are volatile, being subject to calendar-related and large irregular influences. Seasonally adjusted estimates are derived by estimating and removing systematic calendar related effects, such as seasonal and trading day influences, from the original series. Trading day effects are removed from the original estimates prior to the seasonal adjustment process. Seasonal adjustment does not aim to remove the irregular or non-seasonal influences which may be present in any particular month. These irregular influences may reflect both random economic events and difficulties of statistical recording. The estimates of international trade in goods and services on a balance of payments basis are seasonally adjusted. The merchandise exports and imports statistics on a recorded trade basis are not.

**8** The seasonally adjusted statistics in this publication use the concurrent seasonal adjustment technique to estimate factors for the current and previous months. Under this method, the estimates of seasonal factors are fine tuned as new original estimates become available each period. The seasonally adjusted estimates are subject to revisions at each reference month as the estimates of seasonal factors are improved.

## EXPLANATORY NOTES *continued*

### TREND ESTIMATES

**9** The month-to-month movements of the seasonally adjusted estimates may not be reliable indicators of trend behaviour because they include irregular or non-seasonal movements. Trend estimates are derived by applying a 13-term Henderson moving average to the seasonally adjusted series. The use of a 13-term Henderson average can result in revisions to the estimates for the most recent six months as additional observations become available. Revisions can also occur because of changes in the original data and as a result of the re-estimation of the seasonal factors.

### SIGN CONVENTION

**10** In keeping with balance of payments conventions, where statistics are on a balance of payments basis, credit entries (exports) are shown without sign and debit items (imports) are shown as negative entries. For statistics on a recorded trade basis, both imports and exports are shown without sign. The calculation of percentage changes on balance of payments debit items are made without regard to sign. References to balance of payments debit items in Key Figures, Key Points, and Analysis and Comments are also made without regard to sign.

### COMMODITY BREAKDOWNS OF GOODS

**11** For details of the classification used for goods exports on a balance of payments basis (credits), see table 6.6 in *Balance of Payments and International Investment Position, Australia: Concepts, Sources and Methods, 1998* (cat. no. 5331.0).

**12** Details of the classification of goods imports on a balance of payments basis (debits) are provided in table 6.7 in cat. no. 5331.0. Goods debits sub groups at a more detailed level than shown in Table 4 are available from the Time series spreadsheets.

**13** The recorded trade statistics shown in tables 12 and 13 are classified by the Standard International Trade Classification (SITC). The first section of tables 12 and 13 show the most significant commodities (by value) at the SITC 3 digit level.

### COMMODITY BREAKDOWNS OF SERVICES

**14** The quarterly detailed services data published in table 11 are consistent with the monthly aggregates shown in table 9.

**15** Monthly indicators for many of the services components that are only surveyed quarterly are not available. In particular, the Freight and Other transportation components of Total services credits are not available for publication on a monthly basis. The estimates for these items shown in table 9 are therefore derived by dividing the quarterly estimate by three. Where quarterly survey data are not available, freight debits are derived directly from imports data for the reference month as a difference between total merchandise cost, insurance and freight (CIF) and free on board (FOB), adjusted to reflect timing and processing adjustments. For freight credits and other transportation credits and debits, estimates are derived by extrapolating the last month's data by an average of movements for the same month over the three previous years.

### TOURISM RELATED SERVICES

**16** The tourism related services memorandum items provide timely indicators of the movements in tourism related activities, not an absolute measure of the level of these activities. These series are not compiled on a balance of payments conceptual basis. However, they do provide a reasonable approximation of world tourism related activities.

**17** The memorandum items have been derived by re-aggregating relevant components of the international trade in services series of the balance of payments accounts. The tourism related indicator has been derived by combining total travel services (business, education-related and other personal travel), passenger fares, and the air transport component of other transportation services which relates to agency fees and commission receipts.

### SERVICES BY STATE AND BY PARTNER COUNTRY

**18** Annual services data by state and by partner country are released twice yearly. Calendar year data are usually released with the March issue of this publication and financial year data are released with the September issue. Refer to Time Series Data for details.

## EXPLANATORY NOTES *continued*

### SERVICES BY STATE AND BY PARTNER COUNTRY *continued*

**19** Services credits are classified by the state of provision, while services debits are classified by the state of consumption. The state allocations for transportation, travel and communication services are based on a number of indicators including merchandise trade statistics by state, overseas passenger arrivals and departures by state of clearance and data provided by the Department of Education, Science and Training. The allocation for other services (about 25% of all trade in services) is primarily based on the location of the business reporting the information, which serves as a proxy for the state of provision/consumption of that service. The data should be used with care but are considered suitable for analysis over time.

**20** A comprehensive explanation of the data sources used and the methodology applied in the compilation of partner country statistics is provided in Chapter 17 of *Balance of Payments and International Investment Position, Australia - Concepts, Sources and Methods* (cat. no. 5331.0). Approximately 7% of total services credits and 5% of total services debits for 2005–06 are either confidential, or unable to be allocated to individual countries.

### ABS DATA AVAILABLE

**21** More detailed balance of payments and recorded merchandise trade data, including forward seasonal factors are available as time series spreadsheets or data cubes from the ABS website.

**22** More detailed merchandise trade data by commodity, country and state, and statistics included in this and related publications are available on request. Inquiries should be made to the National Information and Referral Service as shown on the back of this publication.

### RELATED PRODUCTS AND PUBLICATIONS

**23** Users may also wish to refer to the following publications which can be downloaded free of charge from the ABS web site:

- *Balance of Payments and International Investment Position, Australia* (cat. no. 5302.0) – issued quarterly
- *International Merchandise Imports, Australia* (cat. no. 5439.0) – issued monthly
- *International Trade Price Indexes, Australia* (cat. no. 6457.0) – issued quarterly
- *Balance of Payments and International Investment Position, Australia: Concepts, Sources and Methods* (cat. no. 5331.0)
- *Information Paper: Quality of Australian Balance of Payments Statistics* (cat. no. 5342.0)
- *International Merchandise Trade, Australia: Concepts, Sources and Methods* (cat. no. 5489.0)
- *A Guide to Australian Balance of Payments and International Investment Position Statistics* (cat. no. 5362.0.55.001).

**24** Current publications produced by the ABS are listed in the Catalogue of Publications and Products (cat. no. 1101.0). The Catalogue is available from any ABS office or from this site. The ABS also issues a daily Release Advice on the web site which details products to be released in the week ahead.

### CAUTIONARY NOTE

**25** The tables in this publication are presented on two bases. Tables 1–11 contain estimates of Australia's international trade in goods and services which have been adjusted for coverage, valuation and timing to a balance of payments basis. Tables 12–15 contain estimates of merchandise exports and imports based on Australian Customs Service records. Paragraph 5 of the Explanatory Notes provides an explanation of the difference between these bases.

### ROUNDING

**26** Where figures have been rounded, discrepancies may occur between sums of the component items and totals. Percentage movements are calculated from data at the level of precision presented in this publication (i.e. \$m) except for international merchandise trade tables.



## EXPLANATORY NOTES *continued*

---

### ABBREVIATIONS

\$b	billion (thousand million) dollars
\$m	million dollars
ABS	Australian Bureau of Statistics
APEC	Asia Pacific Economic Co-operation
ASEAN	Association of South-East Asian Nations
n.e.s.	not elsewhere specified
n.i.e.	not included elsewhere
OECD	Organisation for Economic Co-operation and Development
SAR	Special Administrative Region
SITC	Standard International Trade Classification

## APPENDIX RELATED ARTICLES

<i>Article</i>	<i>Source(a)</i>	<i>Issue</i>
<b>Investment</b>		
Foreign ownership of equity	5302.0	Sep qtr 2006
Kangaroo bonds	5302.0	Sep qtr 2004
Gross external debt	5302.0	Sep qtr 2003
Measuring Australia's foreign currency exposure	5302.0	Dec qtr 2001
<b>Balance of payments</b>		
International comparison of balance of payments statistics	(b) 5363.0	1999–2000
The Sydney Olympic Games Update	5368.0	Jul 2000
The Sydney Olympic Games	5302.0	Sep qtr 1999
<b>Merchandise trade</b>		
Number and characteristics of Australian exporters	5368.0.55.006	2005–2006
New methodology for deriving counts of Australian exports	5368.0	Feb 2006
Export and Import Invoice Currencies, 2005	5368.0	Jun 2005
Australia's Importers, 2003–04	5368.0	Nov 2004
Australia's Exporters, 2003–04	5368.0	Oct 2004
Australia's Trade with the USA	5368.0	Mar 2004
Trade through Australia's ports	5422.0	Sep qtr 2002
Australia's trade in wine	5422.0	Dec qtr 2001
Australia's export markets, 1991–92 to 2000–01	5422.0	Jun qtr 2001
Major commodities traded by Australia, 1991 to 2000	(b) 5422.0	Dec qtr 2000
Australia's trade in crude petroleum	5422.0	Mar qtr 2000
Australia's merchandise trade with the Republic of Korea	5422.0	Sep qtr 1999
Australia's merchandise trade with Japan	5422.0	Mar qtr 1999
Bilateral merchandise trade statistics reconciliation: Australia and the European Union, 1992 to 1997	5422.0	Sep qtr 1998
<b>Trade in services</b>		
International trade in services by partner country, 2006, preliminary	5368.0	Dec 2006
Changes to International Trade in Services Statistics, August 2006	5368.0	Aug 2006
Changes to International trade in services travel statistics	5368.0	Aug 2005
International trade in education services	5302.0	Sep 2001
<b>Finance</b>		
Impact of 2003–2004 farm season on Australian production	1350.0	Oct 2003
Recent trends in construction and first home buyers finance	5609.0	Mar 2002
Household sector data in the financial accounts	5232.0	Mar qtr 2002
Investment Managers	5655.0	Jun qtr 2000
Venture capital, 1999–2000	5611.0	2000–01
<b>Technical information</b>		
Changes on 1 January 2007 to Statistical Codes in the AHECC and the Customs Tariff	1233.0.55.001	Nov 2006
ABS implementation in January 2007 of revisions to international trade classifications, 2007	5368.0.55.005	June 2006
Revised Treatment of Goods for Processing in Merchandise Trade and Balance of Payments Statistics	5368.0	May 2006
Impact of Customs and ABS changes on import statistics from October 2005	5439.0	Oct 2005
ABS Management of the Impact of the Implementation of the Imports Component of the New Customs System	5439.0	Aug 2005
Changes to country and port classifications	5368.0	May 2003
Implementation of New Customs Systems	5368.0	Aug 2004
The effect of customs changes on export statistics	5422.0	Jun qtr 2002
Harmonized system changes	5422.0	Sep qtr 2001
International trade review: data quality and client queries	5422.0	Jun qtr 2000
Data confidentiality	5422.0	Dec qtr 1999

(a) In the ABS web site home page, select Key Products; Papers & Articles; ABS Articles; Feature Articles by Catalogue Number.

(b) This article can be found in pdf format by referring to the Details page of the specified issue of this publication on the ABS web site and click on Download Now.



## FOR MORE INFORMATION . . .

*INTERNET* **www.abs.gov.au** the ABS website is the best place for data from our publications and information about the ABS.

*LIBRARY* A range of ABS publications are available from public and tertiary libraries Australia wide. Contact your nearest library to determine whether it has the ABS statistics you require, or visit our website for a list of libraries.

## INFORMATION AND REFERRAL SERVICE

Our consultants can help you access the full range of information published by the ABS that is available free of charge from our website, or purchase a hard copy publication. Information tailored to your needs can also be requested as a 'user pays' service. Specialists are on hand to help you with analytical or methodological advice.

*PHONE* 1300 135 070  
*EMAIL* [client.services@abs.gov.au](mailto:client.services@abs.gov.au)  
*FAX* 1300 135 211  
*POST* Client Services, ABS, GPO Box 796, Sydney NSW 2001

## FREE ACCESS TO STATISTICS

All statistics on the ABS website can be downloaded free of charge.

*WEB ADDRESS* [www.abs.gov.au](http://www.abs.gov.au)



2536800007072

ISSN 1328 2778

RRP \$26.00